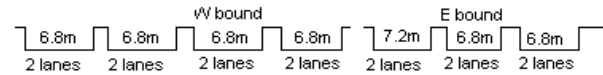


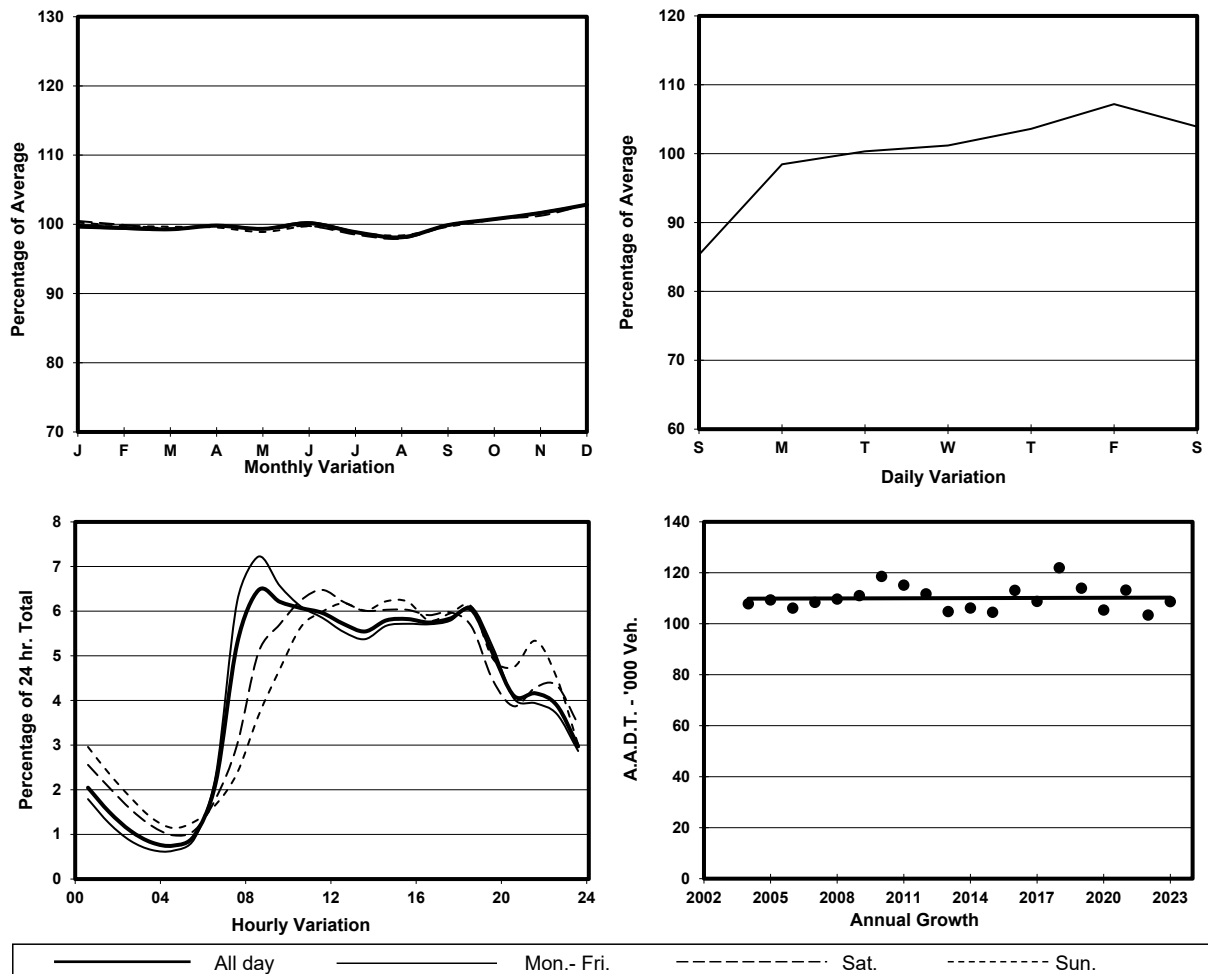
YEAR 2023

LINK ISLAND EASTERN CORRIDOR (from HEALTHY ST INT
EASTERN END to TAIKOO SHING INT WESTERN END)

CORE STATION 1003
ROAD NETWORK MAJOR
ROAD TYPE EXPRESSWAY



1. TRAFFIC FLOW VARIATION AND GROWTH



2. TRAFFIC CHARACTERISTICS (BY DIRECTION)

Parameter	All - Day	Mon. - Fri.	Sat.	Sun.
EAST BOUND				
A.A.D.T.	48900	50290	51890	41850
R 12 / 24 - %	69.2	70.7	67	62.7
R 16 / 24 - %	87.6	88.8	84.9	83.8
AM Peak Hour	0900-1000	0900-1000	0900-1000	0900-1000
One-way flow at AM peak hour	3060	3390	2820	1830
T - % (AM)	-	-	-	-
PM Peak Hour	1800-1900	1800-1900	1600-1700	1700-1800
One-way flow at PM peak hour	3000	3160	3080	2620
T - % (PM)	-	-	-	-
Prop.of commercial vehicles - 16 hr.	-	-	-	-
WEST BOUND				
A.A.D.T.	59750	61630	61970	51650
R 12 / 24 - %	71.5	72.8	69.5	66.6
R 16 / 24 - %	87.7	88.7	85.7	84.9
AM Peak Hour	0800-0900	0800-0900	0900-1000	0900-1000
One-way flow at AM peak hour	4120	4770	3680	2560
T - % (AM)	-	-	-	-
PM Peak Hour	1800-1900	1800-1900	1700-1800	1800-1900
One-way flow at PM peak hour	3540	3660	3800	3170
T - % (PM)	-	-	-	-
Prop.of commercial vehicles - 16 hr.	-	-	-	-

3. OTHER INFORMATION AND COMMENT